

GrassGrid

Enhancing Our Environment

GrassGrid provides designers and developers with a grassed alternative to concrete and asphalt surfaces that is practical, aesthetically pleasing and environmentally friendly.



Stable GrassGrid Surface

Unstable Surface



Applications:

- Emergency and firelane access
- Vehicle overflow parking lots for commercial developments, homes, sports complexes, festival grounds, churches and more
- Golf cart paths and mountain bike trails
- Racetrack infield and pit areas
- Drainage channels
- Slope stabilization and erosion control
- Street shoulder parking



BELGARD®



Installation Procedures:

GrassGrid is easily assembled requiring no special tools. The product conforms to odd shapes or profiles, and excess cells may be trimmed with pruning shears.

- Prior to installation, calculate the area where GrassGrid is to be installed
- Excavate and/or level the area
- Install drainage systems, irrigation systems, and utility lines in the subgrade, as needed
- Lay and compact a road base or washed paving sand to provide support for projected weight-bearing loads
- Position GrassGrid cells on the compacted base
- Cover the GrassGrid cells with a recommended sand soil mix for turf establishment
- Apply recommended moisture, water retention agents and fertilizers
- Place seed, turf or hydro-seed onto the filled GrassGrid cells
- Implement regular maintenance schedules

Note: Installation may vary with different geographical locations. GrassGrid effectively stabilizes decorative gravel.

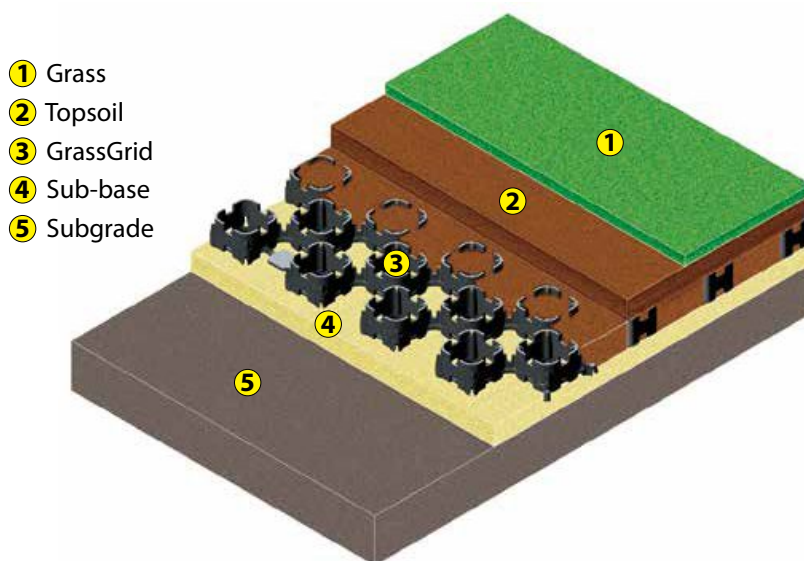
Your Belgard Dealer

**Northwest Landscape
& Stone Supply**
5883 Byrne Road,
Burnaby, BC V5J 3J1
T: **604.435.4842**
TF: **1.888.887-7738**

Visit our website at
www.belgard.com

What is GrassGrid

GrassGrid is a lightweight plastic structure manufactured from 100% recycled plastics designed to stabilize and support turf, grass or decorative gravel. GrassGrid is used in the landscape, construction and environmental remediation industries. Positioned under the grass surface, GrassGrid distributes loads from pedestrian and vehicular traffic to the base course below, minimizing grass and root compaction. The interconnected cells allow roots to develop with minimal restriction, resulting in a durable and stable grass surface.



GrassGrid is a structural module designed with sufficient depth to contain and stabilize grass or decorative gravel. It is engineered to withstand loads in areas subjected to pedestrian and occasional vehicular traffic.

GrassGrid replaces asphalt or concrete to create permeable surfaces and enable these areas to blend into the aesthetics of their surroundings. GrassGrid consists of a network of porous cells which protect grass roots against compaction. It can also be used to stabilise decorative gravel. The openings at the base and side allow roots and plant runners to spread freely to establish vigorous root development to encourage healthy plant growth.

GrassGrid has been tested in accordance with ASTM D695-08 to withstand compressive strength exceeding 3000 t/m² (4267 psi) and exceeds typical load requirements of vehicles, namely:

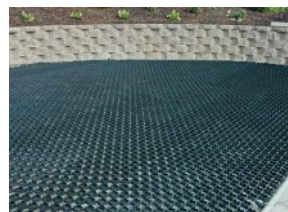
Passenger vehicle	up to 28 t/m ² (40 psi)
Light duty van	up to 42 t/m ² (60 psi)
Fire engine /	up to 77 t/m ² (110 psi)
Container truck	
SCDF CP 2002	80 t/m ² (113 psi)

Sizes and Specifications:

- Unit Size: 19-5/8" (500mm) x 19-5/8" (500mm) x 1-3/8" (35mm)
- Weight: 9 lbs/yd² (4.7 kg/m²)
- Material: Recycled Polypropylene
- Compressive Strength: Core Filled 3,000 t/m²
- Biological/Chemical Resistance: Unaffected by molds and algae & good resistance to alkalis and bitumen
- Service Temperature: -22° F to 48° F (-30° C to 120° C)

Advantages:

- Reduces erosion and soil migration
- Permeable alternative to asphalt and concrete surfaces
- Reduces Urban Heat Island Effect
- Conforms to undulating surfaces
- Snap-on connectors ensure modules remain in place
- Enhances site appearance through restoration of vegetation
- Rapid installation with minimal installer training
- Stacking ability reduces storage and transport costs
- Made from 100% recycled materials
- Supports Green Building - LEED®



BELGARD®